

# LPG SERIES-GEL Battery

## LPG12-70H (12V70AH)

### Specification

Nominal Voltage	12V	
Nominal Capacity(20HR)	70.0AH	
Dimension	Length	259±3mm (10.2 inches)
	Width	168±2mm (6.61 inches)
	Container Height	208±3mm (8.19 inches)
	Total Height (with Terminal)	214±3mm (8.43 inches)
Approx Weight	Approx 23.0 kg (50.7lbs)	
Terminal	T6	
Container Material	ABS	
Rated Capacity	70.0 AH/3.50A	(20hr, 1.80V/cell, 25°C/77°F)
	65.1 AH/6.51A	(10hr, 1.75V/cell, 25°C/77°F)
	56.0 AH/11.2A	(5hr, 1.75V/cell, 25°C/77°F)
	48.6 AH/16.2A	(3hr, 1.75V/cell, 25°C/77°F)
	38.5 AH/38.5A	(1hr, 1.67V/cell, 25°C/77°F)
Max. Discharge Current	700A (5s)	
Internal Resistance	Approx 7.9mΩ	
Operating Temp. Range	Discharge	-20~55°C (-4~131°F)
	Charge	0~40°C (32~104°F)
	Storage	-20~50°C (-4~122°F)
Nominal Operating Temp. Range	25±3°C (77±5°F)	
Cycle Use	Initial Charging Current less than 17.5A. Voltage	
	14.4V~15.0V at 25°C(77°F)Temp. Coefficient -30mV/°C	
Standby Use	No limit on Initial Charging Current Voltage	
	13.5V~13.8V at 25°C(77°F)Temp. Coefficient -20mV/°C	
Capacity affected by Temperature	40°C (104°F)	103%
	25°C (77°F)	100%
	0°C (32°F)	86%
Self Discharge	Leoch LPG series batteries may be stored for up to 9 months at 25°C(77°F) and then a freshening charge is required. For higher temperatures the time interval will be shorter.	



### Applications

- ◆ Telecommunications
- ◆ Solar system
- ◆ Wind power system
- ◆ Wheelchair
- ◆ Floor cleaning machines
- ◆ Golf trolley
- ◆ Boats



### Constant Current Discharge (Amperes) at 25 °C (77°F)

F.V/Time	20min	30min	45min	1h	2h	3h	4h	5h	6h	7h	8h	9h	10h	20h
1.85V/cell	59.2	46.5	35.5	29.7	18.8	14.4	11.9	10.3	8.86	7.84	7.07	6.46	6.11	3.36
1.80V/cell	67.8	51.9	39.1	32.8	20.4	15.4	12.6	10.8	9.30	8.21	7.41	6.80	6.38	3.50
1.75V/cell	76.2	57.1	42.3	35.1	21.6	16.2	13.2	11.2	9.63	8.50	7.65	7.00	6.51	3.57
1.70V/cell	82.1	61.2	44.9	37.1	22.9	16.9	13.6	11.6	9.96	8.78	7.88	7.19	6.66	3.62
1.67V/cell	85.5	63.6	46.5	38.5	23.5	17.5	14.0	11.8	10.1	8.91	8.00	7.28	6.74	3.65
1.60V/cell	92.6	68.0	49.9	40.9	24.4	18.2	14.5	12.2	10.4	9.10	8.14	7.44	6.87	3.70

### Constant Power Discharge (Watts/cell) at 25 °C (77°F)

F.V/Time	20min	30min	45min	1h	2h	3h	4h	5h	6h	7h	8h	9h	10h	20h
1.85V/cell	113.3	89.6	68.8	57.8	36.8	28.1	23.4	20.3	17.5	15.6	14.1	12.9	12.2	6.71
1.80V/cell	128.1	99.2	75.3	63.5	39.6	30.0	24.7	21.2	18.4	16.2	14.7	13.5	12.7	6.98
1.75V/cell	142.4	108.0	80.8	67.6	41.9	31.6	25.8	22.0	19.0	16.8	15.1	13.9	12.9	7.11
1.70V/cell	151.7	114.7	85.2	71.1	44.2	32.9	26.6	22.6	19.6	17.3	15.6	14.3	13.2	7.19
1.67V/cell	156.2	117.9	87.6	73.3	45.1	33.8	27.1	23.0	19.8	17.5	15.8	14.4	13.4	7.25
1.60V/cell	167.3	125.1	93.4	77.5	46.7	34.9	28.1	23.6	20.2	17.8	16.0	14.7	13.6	7.35

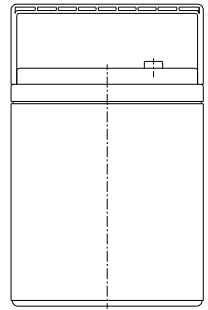
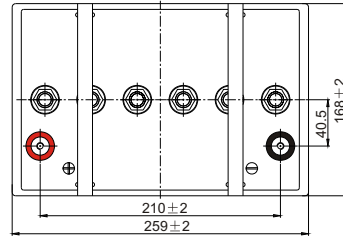
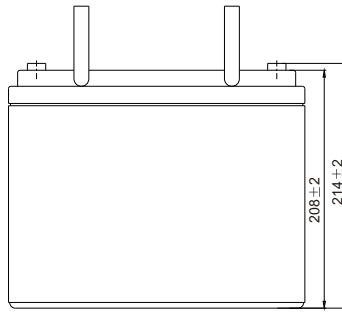
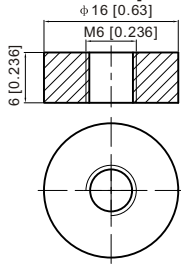
Specifications subject to change without notice.



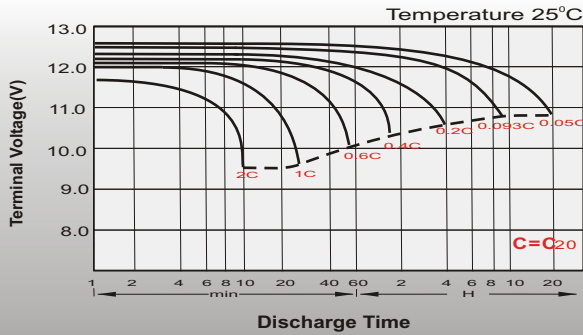
## Dimensions

### T6 Terminal

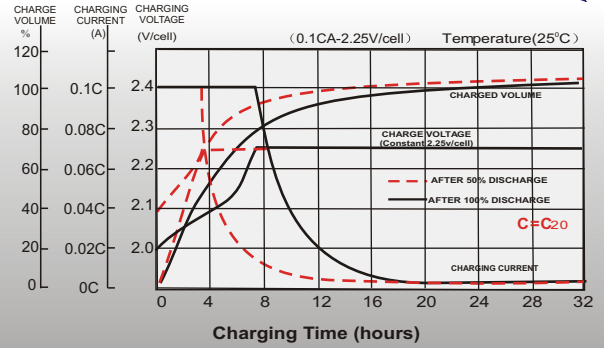
Unit: mm [inches]



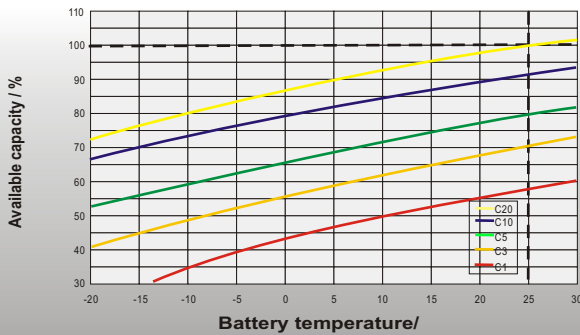
## Discharge Characteristics



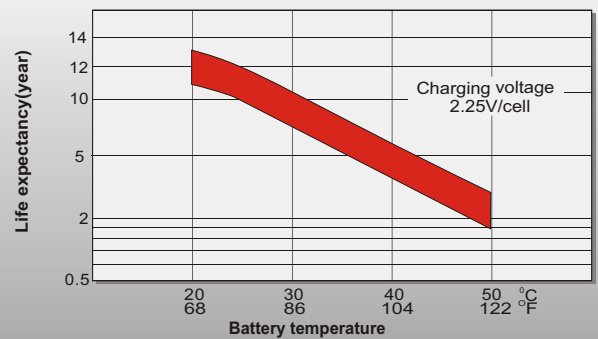
## Float Charging Characteristics



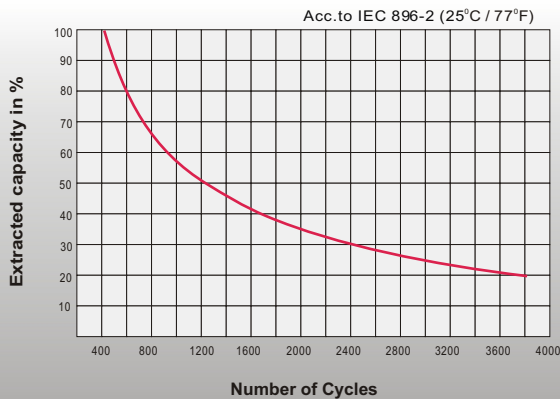
## Temperature Effects in Relation to Battery Capacity



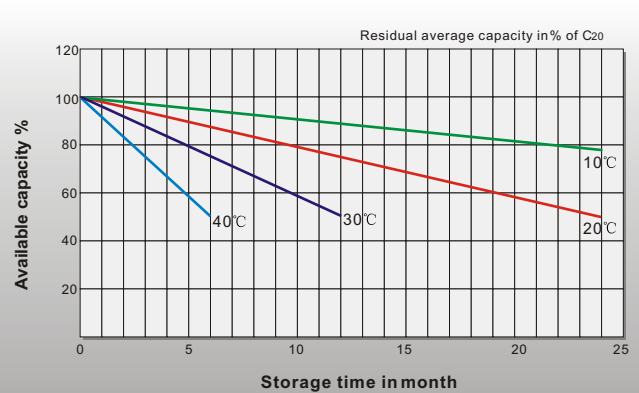
## Effect of Temperature on Long Term Float Life



## Cycle Life in Relation to Depth of Discharge



## General Relation of Capacity VS. Storage Time



## Sales Office

### China sales office:

Add: 5th Floor, Xinbaohui Bldg., Nanhai Blvd.,  
Nanshan, Shenzhen, China. 518052  
Tel: +86-755-86036060 (100 lines)  
Fax: +86-755-26067269  
E-mail: export@leoch.com  
Http://www.leoch.com

### HongKong sales office:

Add: Workshop C, 33/F, TML Tower,  
No. 3 Hoi Shing Road, Tsuen Wan,  
New Territories, Hong Kong  
Tel: +852 35786666  
Fax: +852 21170016  
E-mail: sales.hk@leoch.com

### Singapore sales office:

Add: No. 1 Tech Park Crescent,  
Singapore 638131  
Tel: +65 68416629  
Fax: +65 68443210  
Email: sales.sg@leoch.com

### North America sales office:

Add: 19751 Descartes, Unit A,  
Foothill Ranch, CA 92610, USA  
Tel: 949-588-5853  
Fax: 949-588-5966  
E-mail: sales@leoch.us  
Http://www.leoch.com

### Europe sales office:

Add: 9B Wheatstone Court, Waterwells  
Business Park, Gloucester, GL2-2AQ,  
UK United Kingdom  
Tel: +44(0)1452 729428 / 1452 729696  
Fax: +44 (0)1452-690125  
E-mail: Sales.Europe@leoch.com